

Customer :

customer

Customer part :

customer part

Comment :

Comment

S1=4.32

S2=4.22

Tmax=462

Tp S2=501.0

PI=0.51

HI=96

Sample =1714.30

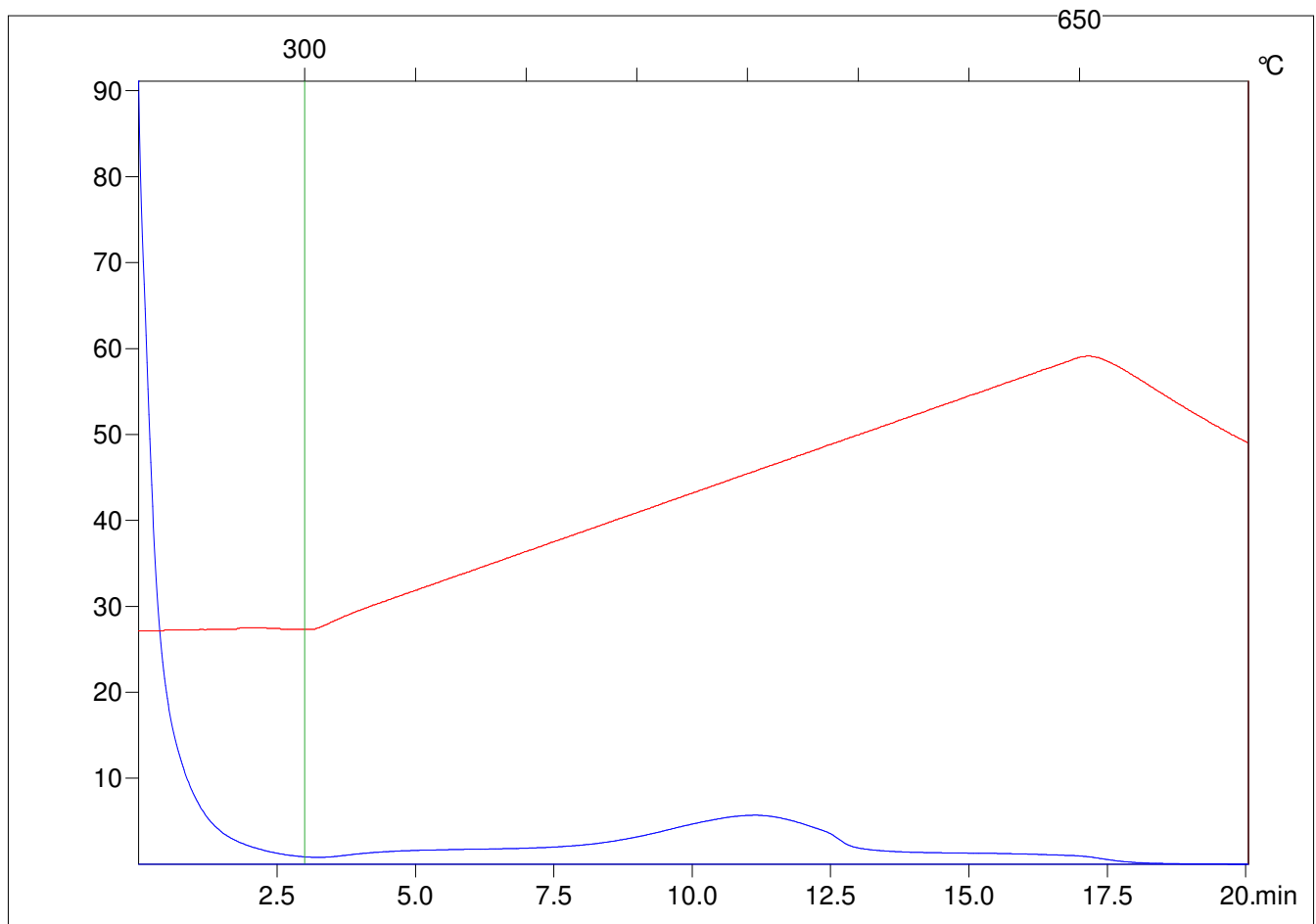
Method =Bulk Rock

Cycle=Basic

KFID(10\*9)=1444

Qty =70.1

TOC=4.4



C:\VINC\PK2\_1792\PK013.R00 : FID pyrolysis graphic

State

Pyro Status

Oxi Status